



# alumni newsletter

## Neal Newton Named Distinguished Alumnus



Dr. W. Neal Newton of the Class of 1951 has been selected as the 1983 recipient of the "Distinguished Alumnus Award" of the WU Dental Alumni Association. The award will be presented to Dr. Newton at the St. Louis Alumni Luncheon, to be held on Friday, April 15, at Stouffer's Riverfront Towers in downtown St. Louis.

An anonymous committee of alumni leaders chose Dr. Newton for the award, which is presented each year by the Alumni Association to one or more alumni of the School of Dental Medicine who have distinguished themselves through their services to the dental profession, the School, and the general community.

Dr. Newton has been an active leader in School alumni affairs for many years and was cited as "Alumnus of the Year" by his alma mater in 1972. In recent years, he established and chaired for four years the highly-successful "Big Brother Program" in which alumni and senior students interact. He also chairs the School's Alumni Advisory Board. He was President of the Dental Alumni Association in 1967 after previously holding the post of Secretary-Treasurer of the Association for seven years. In 1966, he chaired the celebration of the School's centennial. Several years ago, he also revised and rewrote the Association's bylaws.

A member of WU's William Greenleaf Eliot Society, Dr. Newton was a charter member of the School's three giving clubs and served as President of the Leroy R. Boling Associates for three years. He recently was a member of the School's Task Force as part of the Commission on the Future of Washington University.

Very active also in general dental affairs, Dr. Newton has served as president of ten dental organizations, including the Missouri Dental Association, and was a member of the ADA House of Delegates for ten years. He is now Regent for the Sixth District of the International College of Dentists and serves on the board of directors and on the Dental Theatre Committee of the Foundation of the Greater St. Louis Dental Society.

Dr. Newton is a Fellow of the American College of Dentists, International College of Dentists, and American Academy of Pedodontics. He is a member of Omicron Kappa Upsilon.

He was appointed by St. Louis County Executive Gene McNary to six-year terms on the St. Louis County Community Health and Medical Care Advisory Board and the St. Louis County Health Commission. He also served a six-year term on the Advisory Board on Indian Health of the federal Department of Health, Education and Welfare. Dr. Newton is a Lieutenant-Colonel in the U.S. Army Reserve, Retired.

A dentist's son, Dr. Newton was born in Sac City, Iowa, and grew up in Iowa and Illinois. He graduated from high school in Champaign, Illinois, and received his pre-dental education at the University of Illinois before coming to our School. Immediately after receiving his dental degree, he joined the clinical faculty of the School's Department of Pedodontics and was a member of that faculty for 18 years. He served as an Army dental officer during the Korean War and, upon return-

## Dean's Message

The time is drawing near for our California Dental Seminar and 117th Annual Meeting of our Dental Alumni Association and all signs point to a festive, well-attended event. Alumni from all over the country have told us they plan to attend and we're expecting the largest Annual Meeting turnout in some time. Just a quick reminder that the dates of the week-long trip to Monterey and San Francisco are April 24 to May 1. You'll find complete information on the trip elsewhere in this issue of the **Dental Alumni Newsletter**. You also should have recently received a mailing from the Alumni Association containing trip information and various reservation forms. If you didn't receive it or want more information, please call Irv Litvag at the School (314) 454-0387 and he'll see that you get what you need.

Also included in that mailing was information and a reservation form for our St. Louis Alumni Luncheon to be held on April 15. A number of reservations already have been made for the luncheon and more are arriving each day. The luncheon was scheduled for this date to coincide with the annual meeting of the Missouri Dental Association, which is in St. Louis this year. It will be a great chance for you to get together with your fellow alumni and to hear a

report on civilian life, opened an office in suburban Webster Groves, where he limited his practice to pedodontics. Dr. Newton has practiced in Webster Groves since that time.

Dr. Newton and his wife Nancy are the parents of two sons: 28-year-old Gregory, a 1980 honors graduate of the School, who is in general practice in the St. Louis area; and 25-year-old Scott, a registered nurse in Fort Lauderdale, Fla. Nancy Newton works full-time as head nurse at a convalescent home in Webster Groves.

progress report on the School and also to participate in all the activities of the Missouri state meeting. Completing his term as President of the Missouri Dental Association, by the way, is one of our most supportive alumni, Dr. William Brandhorst. I hope you'll join me at the meeting in applauding Bill's fine work as his term in office comes to an end.

Many of our anniversary classes are planning reunions in St. Louis at the time of the Alumni Luncheon and some are also planning get-togethers in San Francisco to coincide with the Alumni Meeting there. We're looking forward to greeting and meeting many friends from these special classes in both cities.

Last year, we set into motion an intensive new effort to recruit qualified students from all parts of the nation. Such an effort is very necessary now, and will be in future years, because the competition among dental schools for qualified students is steadily intensifying. We don't intend to get left out! The applicant pool of qualified men and women is declining and this poses serious problems for all schools. Figures released recently by the American Association of Dental Schools show that the number of students applying to dental schools through the centralized AADS Application Service (in which 51, including us, of the 60 U.S. dental schools participate) declined 4.9% from last year. This continues a seven year slide in which the number of applications has declined about 50% overall. The AADS attributes the decline mainly to rising costs and the decreasing availability of loan funds as well as to a perception on the part of potential applicants that practice opportunities in dentistry have lessened. Medical schools, incidentally, also are experiencing a decline in applicants, but not such a marked one as dental schools. Medical applications have

[continued on page 2]

## DEAN'S MESSAGE cont.

dropped 16% over the last eight years.

Mrs. Marie Liddy of our staff has been given primary responsibility for coordinating our recruitment program and I am working closely with her. Both of us have been spending a great deal of time in visiting various colleges and universities to discuss our program with pre-dental advisors and to meet and interview prospective students. Our alumni representatives in various areas also are providing much help with such visits. This project is time-consuming and costs money, but it is essential to the School's future. We are encouraged by the initial results and are confident that we will be able to hold our own in the great quest for qualified students. As to the impact of all this on our future plans for enrollment and class size: we do not want to set arbitrary numbers for the limited reductions of class size that we contemplate. The availability of well-qualified students will be the best guide in establishing the size of upcoming classes.

Some very significant administrative changes are underway at the School. We have created a new Office of Student Services that has overall supervisory responsibility for Admissions, Recruitment, Registrar, Financial Aid, Student Counseling, and the Grievance Committee. Dr. John R. Ring, who has so capably supervised our Admissions work for years, heads the overall Office of Student Services and after his forthcoming retirement, the post will be filled by Dr. Charles Waldron. Dr. Waldron, our new Oral Pathologist, is a former dental school dean and a most capable administrator. Dr. Ring also will be succeeded as Director of Admissions by Dr. Richard Brand, who has worked closely with Dr. Ring in this area for some time.

Dr. Waldron has agreed to accept another major administrative post: he is Chairperson of the new Department of Biomedical Sciences and Pathology. This department includes the Division of Cell & Molecular Biology and Biochemistry under Dr. Arnold Kahn; the Division of Anatomical Sciences and Physiology under Dr. Richard Brand; and the Division of Pathology, Microbiology, and Pharmacology under Dr. Samir El-Moffy. We feel that this new departmental plan will provide a more efficient blending of our teaching and research efforts in

the biomedical science and pathology areas.

As part of the major upgrading of our overall research program, Dr. Arnold Kahn has accepted the additional responsibility of Director of Research. Dr. Kahn, who himself has been extremely active in research, will stimulate interest among the School's faculty in the conduct of research, will form an advisory council to promote research activities, and will have general responsibility for coordinating research at the School.

Another important recent addition to our staff was Mr. Robert B. Wilson. As Administrative Officer, Bob Wilson will develop operational systems that will serve the School for years to come and will supervise the computerization of data and records. He has been with Washington University since 1966 and recently was Director of Operations Analysis on the University's main campus.

Washington University soon will announce the launching of a major capital fund campaign to meet the University's needs for the 1980s. Our School will have its own important place in this campaign and we are now working hard on development of a case statement that thoroughly delineates our needs for the rest of this decade. A national campaign for gifts to our School will be conducted under the direction of Mrs. Barbara Kahn, our Director of Development. You'll be hearing more about this in the near future.

Mrs. Selfridge and I have recently returned from a fascinating visit to Indonesia. We were invited there as guests of the Indonesian Department of Defense so that I could evaluate their graduate programs in dentistry as they apply specifically to dentists in public service capacities. In addition to inspecting their programs, I conducted two weeks of workshops on dental services and clinical activities, education and training, and research and development. We discussed the progress they have made in dental education over the last decade and helped them to make plans for the ten years ahead. Our 16-day visit also included talks to the Indonesia Dental Society in Jakarta and the dental faculty of the University of Gadjah Mada in Yogyakarta. I had meetings with the Acting U.S. Ambassador to Indonesia and with representatives of the Indonesian Minister of Education.

## First William E. Koch Lecture

The first annual William E. Koch, Jr. Memorial Continuing Education Course will be presented at the Washington University School of Dental Medicine in St. Louis, Mo. on Saturday, May 21, 1983. The course is titled "New Dimensions in the Diagnosis and Treatment of Facial Pain and Dysfunction" and will be given by Dr. Bernard T. Williams of Kansas City, a noted authority on the subject and a former student of Dr. Koch. Dr. Williams is a 1969 graduate of the Washington University School of Dental Medicine. Dr. Koch, who died in December 1981, was a faculty member of the School for more than 40 years and was long-time Chairman of the Department of Oral Diagnosis & Radiology.

Dr. Williams practices general dentistry in Kansas City and his practice consists primarily of the diagnosis and treatment of facial pain and dysfunction. He was a founder and is a past president of the Mid-Continent Stomatognathic

Society and is an instructor in the Society for Occlusal Studies. He has presented courses and lectures on occlusion and facial pain and dysfunction throughout the nation.

The all-day course will examine facial pain and dysfunction in the basic areas: dental, structural, nutritional, and environmental, and will utilize anatomy, histology, physiology, histopathology, and pathophysiology to develop realistic diagnostic and treatment considerations.

Tuition for this course will be \$85 for dentists (\$45 for auxiliaries) and will include luncheon. The Academy of General Dentistry accepts this course for credit and the course also will satisfy continuing education requirements of state licensing agencies. For more information on this course, contact: Department of Continuing Education, Washington University School of Dental Medicine, 4559 Scott Ave., St. Louis, Mo. 63110.

After brief stops in Singapore and Sydney to conduct some business for the International College of Dentists, Ruthie and I proceeded to Hawaii where we had a lovely, if all too brief, visit. We were royally entertained in Honolulu by about 30 alumni and their wives and friends at a dinner arranged by Joe and Barbara Young. Our deep thanks to them for the marvelous hospitality. We also met with Drs. Fumio Tsuji and Kelvin Kaneshiro, our only two alumni, so far as we know, on the Island of Maui. Dr. Tsuji took us on a breathtaking tour of that enchanting part of the world. During our stay in Hawaii, I also interviewed ten prospective applicants for admission to the School.

Speaking of the ICD, our School is involved in two meaningful joint projects with that fine organization of dentists. We served as the collecting agency for the USA Section of the ICD as some 47 boxes of books and other educational materials were donated by various dentists and by the Quintessence Publishing Company. The boxes were shipped from here to College of the Pacific and then were forwarded to the Chinese consulate for shipment to China, where they

will be used in dental education. This international goodwill project of the USA Section was coordinated in St. Louis by Drs. W. Neal Newton and Leo S. Shanley and the collections were supervised by our Librarian Emeritus, Miss Harriett Steuernagel.

Neal Newton, incidentally, recently was elected Regent for the Sixth District of the ICD and Bo Shanley is serving as Deputy Regent. Both are very active alumni of our School and both are past presidents of our Alumni Association.

Our School also will serve as co-host with the USA Section of the ICD for a pilot weekend continuing education program for ICD Fellows. This first such program will be held at our School in June, with members of our faculty serving as the instructors. It is hoped that this pilot project will lead to the development of ICD-sponsored weekend educational programs throughout the world.

We look forward to greeting you in California or, if not there, at our St. Louis Alumni Luncheon. Try to make at least one of these events. It will be good to see you!

G. D. Selfridge, Dean

## St. Louis

A St. Louis Alumni gathering for all alumni of the School of Dental Medicine has been scheduled for Thursday and Friday, April 14 and 15. The Alumni Gathering will coincide with the annual meeting of the Missouri State Dental Association in St. Louis, thus making it possible for alumni to attend a major dental meeting and also get together with their classmates and friends and catch up on developments at the School.

The alumni activities will begin with the Century Club cocktail party on Thursday evening, April 14, at which members of School alumni giving clubs can socialize with senior students and their spouses as well as with fellow alumni. On Friday, April 15, an alumni luncheon will be held at Stouffer's Riverfront Towers in downtown St. Louis (just a few blocks from the site of the Missouri state meeting). The luncheon program will include Dean Selfridge's report on the state of the School, presentation of the Distinguished Alumnus Award, and presentation of special anniversary commemorative certificates to members of the Classes of 1933 and 1958.

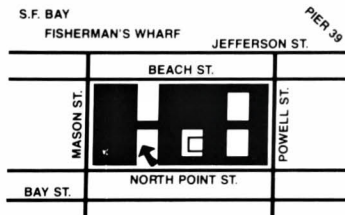
For those alumni not planning to attend the Annual Meeting in San Francisco, alternate reunion parties for the special anniversary classes are being planned for St. Louis. The parties will be held on the evenings of April 14, 15, or 16, depending on the wishes of each class. As we went to press, tentative plans for reunions in St. Louis were being made by the Classes of 1933, 1938, 1943 (both March and December classes), 1948, 1953, 1958, 1963, and 1973. Alumni in those classes will get more information about their reunions from the chairman of each class party.

A reservation form for the April 15 alumni luncheon was included in the packet of reunion information recently mailed to all alumni. That form and a check to cover the cost of the luncheon should be mailed back to the Alumni Association in the envelope provided in the packet. Any alumnus who did not receive the mailing or who needs more information about the St. Louis Alumni Gathering is invited to write Irv Litvag, Executive Secretary of the Dental Alumni Association, at the School, 4559 Scott Avenue, St. Louis, MO 63110, or call him at (314) 454-0387.

## 117th Annual Alumni Meeting

### Sheraton at Fisherman's Wharf

SHERATON HOTELS & INNS, WORLDWIDE  
2500 MASON STREET AT BEACH  
SAN FRANCISCO, CALIFORNIA 94133  
(415) 362-5500



Reservations are streaming in steadily for the forthcoming week-long alumni visit to Monterey and San Francisco and early indications are that a large, enthusiastic crowd of alumni and spouses will be on hand. The exciting trip, which runs from April 24 to May 1, will include the 117th annual meeting of the WU Dental Alumni Association in San Francisco on April 28 and 29. This is an experiment by the Association, which heretofore has held all annual meetings in St. Louis. A successful turnout in San Francisco will encourage the Association to hold its annual session in a different part of the country once every four or five years.

All hotel and ground travel arrangements for the California journey are being made by Passport Travel, Inc. of Overland Park, Kan., which has arranged the Association's highly-successful continuing education trips in recent years. Alumni are reminded that hotel reservations for Monterey and San Francisco must be made through Passport Travel if the special group rate is to be available. The travel agency also will be happy to assist alumni with their travel arrangements to and from California. Passport Travel can be contacted via a toll-free phone number: 1-800-255-6969. Alumni wishing to make reservations for only the San Francisco portion of the trip are also asked to do this through Passport Travel.

A packet of information concerning the California trip, including reservations forms for the alumni luncheon and banquet in San Francisco, has recently been mailed to all WU dental alumni by the Alumni Association. Any alumnus who has not received this

mailing or who has questions about the trip is invited to contact Irv Litvag at the School, 4559 Scott Avenue, St. Louis, MO 63110, phone: (314) 454-0387.

A highlight of the annual alumni meeting always is the reunion parties of anniversary classes and a number of the classes are working on plans to get together in San Francisco in conjunction with the alumni meeting. Tentatively planning San Francisco class parties are the Classes of 1938, 1943 (both March and December classes), 1958, 1963, and 1973.

The gala California trip will begin in colorful Monterey on Sunday, April 24, when alumni and their families will meet for a welcoming cocktail reception. Headquarters for the group will be the beautiful Hyatt Del Monte Hotel, a resort hotel near Monterey Bay with more than 400 plush guest rooms and a golf course, swimming pools, and tennis courts. The hotel has been a winner of the coveted Gold Key Award of Meetings & Conventions magazine.

During the stay in Monterey, two alumni will present outstanding half-day continuing education courses. Dr. John E. Gilster, '44 of St. Louis, Alumni Association Editor and a Past President, will give a "Pedodontics Update" and Dr. Fred C. Eberle, Jr., '61 of San Jose, Calif., will discuss "How to Select an In-House Computer" and will have a variety of computer hardware and software on display. The half-day scheduling of the courses will leave plenty of time for sightseeing in the scenic coastal area of California, including historic Monterey and nearby fashionable Carmel.

Those alumni participating in the travel package through Passport Travel will be tran-

## San Francisco

sported from Monterey to San Francisco on Wednesday, April 27, aboard a comfortable private motorcoach. Some additional sightseeing will be done en route.

The alumni gathering place and Annual Meeting site in San Francisco will be the lovely Sheraton at Fisherman's Wharf, which is magnificently located within walking distance of the famed Wharf, The Cannery, Chirardelli Square, Pier 39, Aquatic Park, and other famed tourist attractions. The Sheraton, a panorama of redwood, brick, and greenery, has more than 500 comfortable guest rooms and the popular Grand Exhibition Restaurant. On Friday, April 29, the Sheraton will be the site of an alumni luncheon and the Association's annual business meeting and, that evening, of the festive annual banquet and installation of officers, which also will salute those members of the 50 and 25-year classes who are present.

To be presented in San Francisco are two more half-day continuing education courses by highly-qualified School alumni. Dr. Paul C. Mowery of Roseville, Calif., a member of the Class of 1958, will discuss "TMJ: A Common Approach to a Hot Topic" and Dr. Jaime A. Yrastorza of Wheat Ridge, Colo. and the Class of 1957 will speak on "Surgical Management of Problems of the TMJ Regions."

A registration fee of \$70 will cover the cost of continuing education courses in Monterey and San Francisco, as well as the registration fee for the Alumni Meeting. Those alumni planning to attend only the San Francisco courses will pay a fee of \$35. This fee is payable to Passport Travel along with other travel costs. Alumni not utilizing Passport Travel will be asked to pay the registration fee when they arrive for the activities in Monterey or San Francisco.

The package plan offered by Passport Travel for the entire week includes hotel accommodations in Monterey and San Francisco, transfers between the airport and hotels in both cities, motorcoach transportation from Monterey to San Francisco, and gratuities for luggage handling at the hotels. An optional day trip to the wineries of the Napa Valley or another to the famed Muir Woods also are available through the travel agency.



About 75 members of the senior class at the Washington University School of Dental Medicine were special guests on October 28 at a lecture on practice management by Dr. Earl Estep of Athens, Texas, a well-known speaker on the subject. The lecture was part of a two-day program given by Dr. Estep at the Holiday Inn Clayton Plaza in Clayton, Mo. under the sponsorship of the Greater St. Louis Dental Society. The students were permitted to attend the all-day lecture through arrangements made with Dr. Estep and the Dental Society by Dr. John A. Mahoney, coursemaster for the School of Dental Medicine's course in practice management. Dr. Mahoney also arranged for five dental supply companies—Sandler & Sons, Saslow Dental-Rosen, Healthco-Krause, Thau-Nolde, and Midvale-Patterson—to sponsor the students' participation in a luncheon during the program. Shown here are (left to right): seniors Frank Bowling, Karen Berrigan, Robert Beavers, Jr., Dr. Mahoney, Dr. Estep, seniors William Cloud III, Steven Boente, and Myles Preble, and freshman Karen Kaiser.

## Faculty Notes

We wish to extend a hearty welcome to a recent addition to the faculty, Dr. Martin J. Makowski, Adjunct Assistant Professor of Pedodontics. Dr. Makowski received his D.D.S. from the University of Detroit in 1980 and recently completed a two-year advanced training program in Pedodontics at the University of Nebraska dental school in Omaha. He is a member of OKU and was President of the dental student government at the University of Detroit. Dr. Makowski is single and resides in West St. Louis County. . . . Congratulations to Dr. Thomas G. Schiff of the Department of Oral Diagnosis and Radiology who recently received an award from the ADA commemorating his nine years of service (including a year as chairman) on the Advisory Committee of the ADA's Food, Nutrition, and Dental Health Program. The award was presented to Dr. Schiff by Dr. Abe Kobren, a member of the ADA Board of Trustees, at the ADA's Sixth Annual Conference on Foods, Nutrition, and Dental Health in Chicago. . . . Another member of the Department of Oral Diagnosis and Radiology, Dr. Alphonse Peterson, is the author of an article on "The Use of Electrosurgery in Reconstructive and Cosmetic Maxillofacial Surgery" in *Dental Clinics of North America* for October 1982. Dr. Peterson presented a table clinic on "A Thermal Surgical Technic, to Eliminate

Retention Cyst" at the recent ADA Annual Session in Las Vegas. . . . A FEW MORE notes from the ADA Annual Session: Howard Wright of the Senior Class represented our School in the student table clinic presentation with a table clinic on the education of dental auxiliaries in recognizing suspicious oral lesions. And a large audience filled a meeting room for an entire day to hear a presentation by eight of our faculty members on a multi-disciplinary look at TMJ problems. We're told that the eight talks generated so much audience interest that question periods had to be limited in order to keep the all-day program on schedule. . . . It's not often that a student is listed as co-author of an article in a dental journal, but senior Jeff Kootman has that honor. He and Dr. Samir K. El-Mofty Associate Professor of Pathology, are co-authors of an article titled "Clinicopathologic Correlations of Oral Premalignant Lesions and Squamous Cell Carcinoma" that appeared in the November-December issue of the *Journal of the Missouri Dental Association*. . . . Dr. Alphonse Peterson, Associate Professor of Oral Diagnosis and Radiology, presented a table clinic on "The Use of Thermal Surgery in Therapeutic Oral and Maxillofacial Surgery" at the 41st Detroit Dental Review, which took place on November 21-22. . . . An abstract of Dr. David J. Davis's article on "Management of the Gaggling Problem in Removable Prosthodontics," which appeared earlier this year in the *Journal of*

the *Missouri Dental Association*, was included in the November 1982 issue of *Dental Abstracts*. Dr. Davis is Assistant Professor of Removable Prosthodontics. . . . Two members of our faculty were pictured in the November 1982 issue of the *Journal of the American Dental Association*. Dr. Sam Holroyd, Professor of Periodontics, was shown in a photo with other alumni of the West Virginia University dental school as they attended a faculty development conference held in August to mark that school's 25th anniversary. And a picture of Dr. William Brandhorst, Associate Professor of Orthodontics, along with a brief profile of Dr. Brandhorst, was carried on the *Journal's* "State Presidents Page." Dr. Brandhorst ('43) is the current president of the Missouri Dental Association. . . . Congratulations to Dr. Kathryn Atchison (Mrs. Brice Benjamin), Adjunct Assistant Professor of Oral Diagnosis and Radiology, who gave birth on November 27 to a baby boy at Barnes Hospital. Young Mr. Benjamin has been named Eric. . . . To the above maternity note, please add the happy news that Mrs. Louise Livingstone Pultman (better known as "Weezie") who was on the staff of Oral Diagnosis and Radiology for a number of years before departing last year, gave birth on November 26 to a baby girl, who has been named Susan. Weezie is the wife of Dr. Mark Pultman, '70, Assistant Professor of Operative Dentistry. Congratulations to the happy

parents. . . . We welcome to the full-time faculty Dr. Lewis W. Miltenberger, '56, Assistant Professor of Anatomy and Biomedical Sciences. Dr. Miltenberger is one of our graduates having graduated in 1956 from the School, where he won an Anatomy prize and Senior honors and was elected to OKU. He served in the Army Dental Corps from 1956-1958 and since that time has practiced dentistry in Salt Lake City and also has taught Anatomy at the University of Utah medical school. He and Mrs. Miltenberger are living in West St. Louis County. They are the parents of two grown children who live in Utah. . . . Congratulations to Nancy Lescher and Donna Sokolowski of the Department of Periodontics, both of whom have been promoted to the faculty rank of Assistant Instructor. . . . Dr. Philip A. Osdoby, Assistant Professor of Anatomy in Biomedical Sciences, was the recent recipient of a three-year \$70,000 grant from the Arthritis Foundation to help support his work on bone development at the cellular level. . . . Best wishes to Dr. Pat Hanlon (Class of '81) and Dr. Terry Sanders (Class of '80), both faculty members in the Department of Community and Preventive Dentistry, who were married on November 27. . . . Dr. Samuel E. Guyer, Chairperson of the Department of Fixed Prosthodontics, has been appointed to a one-year term as an examiner on the Prosthodontic Specialty Examining Committee of the Missouri Dental Board and also has been named Chairman of the three-member committee. . . . Dr. Harold Schreiber, Professor of Periodontics, has been selected for the fifth consecutive year as Chairman of the Missouri Dental Board Examining Committee in Periodontics. Dr. Schreiber also has joined with Dr. George Kyd, Assistant Professor of Periodontics, in establishing the first St. Louis Periodontal Study Group for all periodontists in this area. The Study Group held its first meeting on January 4. . . . The new Elks Dental Clinic on North Grand Blvd., operated by our Department of Community and Preventive Dentistry, was the subject of a feature report by a news team from KSDK, Channel 5. The story was carried on Channel 5 newscasts on December 17. The Department's Community Service Unit #3 had a narrow escape from flood waters in Thayer, Mo., where it was stationed until recently, and



The first annual Greene Vardiman Black Distinguished Lecture Award was presented by the School of Dental Medicine on February 12 to Dr. Ralph W. Phillips, noted educator and researcher in dental materials and long-time faculty member and assistant dean at the Indiana University School of Dentistry. Dr. Phillips was at the School to give a continuing education course in his special field. Dr. Phillips (left) is shown receiving the award from Dean George D. Selfridge.

#### FACULTY NOTES cont.

now has moved on to Rolla, Mo. . . . Dr. Alphonse Peterson of the Department of Oral Diagnosis and Radiology presented a table clinic on "Diagnostic Thermal Surgery in General Practice" at Chicago Midwinter Meeting . . . A method of marking dentures with invisible identification numbers, developed by Dr. David J. Davis, Assistant Professor of Removable Prosthodontics, was the subject of a story in the current issue of the **Washington University Record**. The numbers enable the denture-wearer to be identified in case of an air crash or other tragedy and the invisible aspect overcomes a psychological resistance on the part of some people to having numbers inscribed on their dentures. The hidden numbers will show up on x-rays films of such a denture . . . Our thoughts and prayers are with Dr. Donald G. Sheldon, Assistant Professor of Endodontics, who recently underwent major surgery at St. John's Mercy Medical Center and now is recuperating at home. Dr. Sheldon, a 1961 graduate of our School, has been a leader of the WU Dental Alumni Association for some years and currently holds the post of President-Elect of the Association. His wife, Dr. Doxey Sheldon, Clinical Associate in Endodontics, was a member of our School's Class of 1979 . . . Dr. Jules M. Snitzer, Professor of Periodontics, was re-elected to his tenth consecutive term as Secretary of the Midwest Society of Periodontology at the Society's annual meeting, held February 19-20 in Chicago . . . Dr. Thomas Schiff, Assistant Professor of Oral

Diagnosis & Radiology, presented two clinical programs at the 52nd Liberty Dental Conference of the Philadelphia County Dental Society, which was held in March in Philadelphia. Dr. Schiff presented half-day programs on "Prevention: as Practiced by the Dentist, the Patient and the Oral Products Industry" and "Treatment Planning: A Decision Between the Ideal and the Practical—Always a Compromise."

### Administrative Changes

Dean Selfridge and Associate Dean Bensinger recently announced the establishment, effective immediately, of a new Department of Biomedical Sciences and Pathology under the chairmanship of Dr. Charles Waldron. The new department will include a Division of Cell and Molecular Biology and Biochemistry headed by Dr. Arnold Kahn; a division of Anatomical Sciences & Physiology headed by Dr. Richard Brand; and a Division of Pathology, Microbiology, & Pharmacology headed by Dr. Samir El-Moffy.

The Deans' Office also has announced the appointment of Dr. Kahn to the additional post of Director of Research for the School. He will be charged with the stimulation of additional research activity within the School, formation of an advisory council to promote research, and will have general responsibility to coordinate research interest and endeavors.

A closeup of the handsome plaque presented to Dr. Phillips. The award will be given each year by the School's Department of Continuing Education to an individual who has made significant contributions to continuing dental education. The award honors the name of Dr. G. V. Black, a pioneer member of the School's faculty (and later dental dean at Northwestern University) who was often referred to as a "Father of Modern Dentistry."



### Clinic For Disabled Children, Adults

Often locked out of dental care because of their disabilities, disabled children and adults now have a permanent place to go, thanks to the WU School of Dental Medicine, the Missouri Elks Benevolent Trust, and half a dozen other public and private organizations.

Deaf, autistic, retarded and cerebral palsy patients are among those welcome at the Elks Dental Clinic, which opened at 634 N. Grand Blvd. in October.

Staffed by WU dental students and faculty and dental hygiene students from Forest Park Community College, the clinic serves two purposes: to provide free or low-cost dental care for the handicapped, who frequently are hospitalized for even minor dental work; and to give dental students the experience and confidence they need so that in the future, such patients can be mainstreamed into traditional dental practice.

According to Shirley L. Pierce, '61, WU assistant professor of community and preventive dentistry, an average hospital visit for in-patient dental care costs approximately \$1,100. Yet many times, that is the only alternative for disabled persons who perhaps are subject to seizures, unable to talk, or unable to hold X-ray slides in their mouths.

Pierce firmly believes that up to 95 percent of these special cases can be handled under normal office procedures. "If I can work with dental students at a formative age before they decide they can't treat these people, they won't develop a mental block against the idea," she explained.

Some of the advice she gives students at the cheerfully green and yellow, 3,000-square-foot clinic is to speak in a soft, reassuring tone and to keep steady, physical contact

with the patient. She also urges special caution in using pre-medication, since it sometimes has the opposite effect intended, particularly among autistic patients. As an added touch for children, a toy monkey dangles from the bright light at the end of the dental chair, and a stuffed doll named Henry is available for clutching during anxious moments.

Pierce, the mother of a severely retarded daughter with cerebral palsy who died at age 6, has long been interested in the problems of the disabled. For the past five years, she has supervised half of a statewide mobile dental program for the mentally retarded or developmentally disabled.

The program, begun by the Missouri Elks Benevolent Trust 20 years ago, is now operated by the state through the Missouri Crippled Children's Service. The Elks still provide funds for equipment. WU dental students staff the mobile units, which visit sheltered workshops, regional centers — "anywhere there are people who need us," Pierce said.

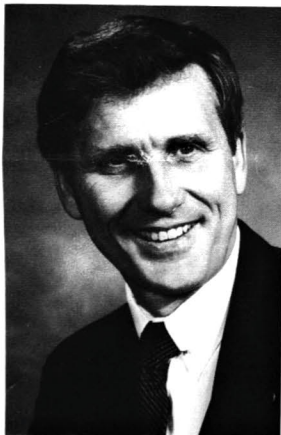
Though highly successful, the mobile program has been limited at times by plumbing and heating problems with the units and lack of work space. Establishing a clinic at a permanent location has allowed the staff to expand their efforts.

Funding for the clinic comes from seven sources: the St. Louis Office for Mentally Retarded and Developmentally Disabled Living Resources, the Productive Living Board for Developmentally Disabled of St. Louis County, Regional Center of St. Louis, Monsanto Co., Neighborhood Assistance Program, the State of Missouri and the City of St. Louis.

## Alumni News

M. Wilson Baltz, '42, retired from the practice of dentistry in Bloomington, Ill., on January 1, 1983. Through the years he has sent extracted teeth to the school for the students use in Dental Anatomy and now just recently the school has received a generous gift of dental supplies, materials and instruments as well as almost forty books for the school library. Many thanks to Dr. Baltz for his interest in the school all these years. . . . It was recently learned that Olen Wilson '56 of Amarillo, Texas and Edna, his wife, and two sons and four daughters, were selected Amarillo's Family of the Year for 1982.

### Jim Shubert President of International Organization



James J. Shubert, '67, has just completed six years as president of the National Field Archery Association of the United States and has recently been elected to succeed Mr. Ulf Hartelius of Sweden as president of the International Field Archery Association.

Dr. Shubert has over thirty years of archery experience and at present serves as a director of the American Archery Council, is president of the International Bowhunter Education Foundation and is a member of the selection committee of the Archery Hall of Fame.

There are currently 13 member nations affiliated with the International Field Archery Association

representing the world regions of North America, Mid-America, Western Europe and the South Pacific.

Along with the International Executive Committee, Dr. Shubert will provide administrative assistance to countries wishing to establish national field archery associations and to affiliate those bodies with the IFAA.

Dr. Shubert looks forward to the challenge and responsibilities of his new office and welcomes questions about the IFAA and its future goals.

Jim practices in Park Rapids, Minnesota, where he lives with his wife, Connie, and their three children.

### Students Win National Board Awards

Two members of the Junior Class have been honored by the WU Dental Alumni Association for their outstanding achievement on the National Board Examination, Part I. The newly-established awards honor students for highest score and highest average on Part I. David Gonzales received the award for highest overall average and Craig Hehn and David Gonzales were co-winners of the award for the highest individual score on the Examination. Each year the name of award recipients will be inscribed on a plaque to be displayed in the Learning Resources Center.

### Alumni Annual Giving

The School of Dental Medicine is now in the final quarter of its Annual Fund drive for the 1982-83 fiscal year, and is seeking unrestricted gifts from alumni in support of its programs. Your gift to the School is extremely important to its continued success and progress.

To date there are 388 members of the Century Club; 109 members of the Boling Associates; 32 members on the Dean's Committee; 33 members in the William Greenleaf Eliot Society; and total giving already exceeds \$100,000.

All gifts received before June 30 will be recorded on the School of Dental Medicine honor role. Sign up! Mail your gift today!

## Letters to The Editor

Mar. 10, 1983

Dear Jack,

Would you please convey a little message for me in the next issue of the Newsletter? I would like to express through this media "Thank you, Class of '40. You brighten my days and I love all of you."

Mildred (Susie) Harms

Oct. 31, 1982

Dear Dr. Gilster:

I just got around to reading the Autumn Newsletter and noted the picture on page 10 showing two members of the class of '49. By now, someone has probably identified them, but in case not, they are Erwin Foxman and Richard Walker. The faculty members they were impersonating were Dr. Webb Gurley and, I think, Dr. John Adams.

For a minute, I thought Dick was doing Dr. Edward F. Allen because of the eyeglasses down the end of the nose, but then I remembered that it was I who did Dr. Allen.

Foxy's rendition of Dr. Gurley evoked a rare glimpse of Dr. G.'s wry humor. Dr. Gurley had a stern countenance and demeanor which suited him well in his role of chief of the clinic. He rarely smiled. Therefore, it was natural for the students to connect the strictness in the clinic with Dr. Gurley's immediate past position, that of Chief of Dental Service, 7th Army

(in Europe).

When the skirts spoofing the faculty were over, Foxy was sweating out Dr. Gurley's reaction to his impersonation. Finally, Dr. Gurley came to him and told him it was a bad impersonation because (and get this) Foxy had the audacity to be wearing a 5th Army patch! (Incidentally, your photograph was backwards because the 5 on the patch is reversed and the patch should be on the left shoulder.)

If you look carefully in the photograph you'll notice that Foxy was wearing a bow tie, when otherwise he had on a complete Army Officer's uniform. The allusion, of course, was to Dr. Gurley's penchant for wearing bow ties.

Which reminds me of the time a classmate (who didn't survive the sophomore year) came to class one morning with an open collar and no tie. This was almost grounds for a general court martial. One by one our class came in, took note of the missing tie, and nervously awaited Dr. Gurley's arrival. Nobody said anything. When Dr. G. did arrive, he immediately spotted the open collar and erupted, "Mr. B., where is your tie?!" The answer was, "Sir, it's still in the dry cleaner's."

Thirty-five years later, I still laugh at that story, but believe me, none of us laughed that morning, at least, not openly.

Thanks for the memory,  
Humbert M. Valenti, Class of '49



Richard Walker and Erwin Fox

### Alumni Deaths

Donald R. Robertson, '21  
Don C. McMurtry, '35  
Luke Howlett, Jr., '33  
Jacob Subo, '33  
Harold Weare, '31  
Lee G. McMillan, '29  
Austin W. Wallace, '24  
Thomas R. Moore, '32

June 1982  
June 1982  
August 1982  
Date unknown  
October 1982  
November 1982  
January 1983  
January 1983

Pre  
Pre  
Vic  
Sec  
Edi  
Exe  
Edi

This  
consid  
written  
person

The  
easier  
spouse  
tax to  
reduces  
estate  
probate  
without  
one es  
fate v  
statute  
settle  
More t  
state h  
plan of  
accept  
make y

An e  
availab  
Univer  
Office.  
discuss  
lifetime  
and for  
also ex  
gift tax

As yo  
sider th  
to the S  
part of  
alumni  
importa  
future p  
the Sch  
the stud  
the Sch  
the edu  
the Sch  
outstan  
increase  
underw  
and me  
The fed  
estate t  
also wi  
using so  
for a bec

Beque  
dollar a  
of the e  
assets,

Spring,

### Officers of the Alumni Association

**President**  
**President-Elect**  
**Vice President**  
**Secretary-Treasurer**  
**Editor**  
**Executive Secretary**  
**Editorial Assistants**

**Godfrey W. Schroeder, D.D.S.**  
**Donald G. Sheldon, D.M.D.**  
**John G. Durham, D.D.S.**  
**Joseph Laffler, D.D.S.**  
**John E. Gilster, D.D.S.**  
**Irving Litvag**  
**Anita Bledsoe**  
**Faith Irons**

## Estate Planning

This is the year to give special consideration to the will you have written. It should be an important personal priority in 1983.

The new tax law makes it much easier to leave assets to your spouse and to make gifts without tax to family and friends. It reduces the cost of settling most estates and uncomplacates the probate process. But, to die without a properly drawn will, as one estate planner has said, is a fate worse than death. State statutes then determine how to settle and distribute your estate. More than likely, the plan your state has made for you is not the plan of your choice. You tacitly accept the state's plan if you do not make your own will.

An excellent new booklet is available from Washington University's Planned Giving Office. "Estate Planning" discusses planning for your own lifetime benefit, for your family, and for your favorite charities. It also explains the new estate and gift tax laws.

As you prepare your will, consider the importance of a bequest to the School of Dental Medicine as part of your plans. The legacies of alumni and friends provide an important source of support for the future progress and excellence of the School. Bequests can increase the student loan fund resources of the School, enhance the quality of the educational program, enable the School to attract and retain outstanding faculty, can support increased research activities and underwrite innovative new ideas and methods in dental education. The federal laws will save you estate tax dollars. Perhaps they also will enable you to consider using some of these saved dollars for a bequest to the School.

Bequests can be specified for a dollar amount, or for a percentage of the estate, or to leave specific assets, such as securities or real

estate, for the benefit of the school.

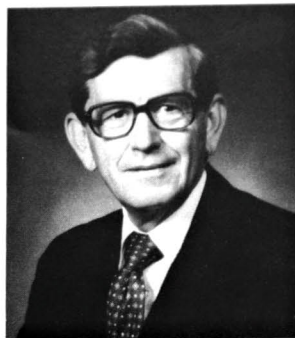
Instructions in your will should clearly identify the School as recipient of your bequest and your preference for how you wish the School to utilize your gift. Student loan support is the great need today. Unrestricted gifts are always most helpful.

For bequests of \$10,000 or more, an endowed fund can be established from which annual income will be used for the purposes you designate or suggest. These permanent funds provide an appropriate memorial to the donor or to loved ones designated by the donor.

For those who wish to provide a bequest to the School, the following wording would be appropriate for use in your will. Your attorney can be helpful in adapting this wording to your specific wishes.

"I give to The Washington University, a Missouri Corporation located at St. Louis, Missouri (describe gift property to be bequeathed). Without imposing any restrictions upon this bequest, I request that it be used for the School of Dental Medicine."

## Charles Waldron Returns



Professor of Pathology, as well as Clinical Associate Professor of Dermatology, at the School of Medicine. He served Emory as Assistant Dean for Specialty Training from 1972 to 1979, as Acting Dean (Sept. 1978 to March 1979) and Dean from March 1979 to Dec. 1981.

He is a member of Omicron Kappa Upsilon as well as Xi Psi Phi. He has served as President of the American Academy of Oral Pathology (1058), President of the American Board of Pathology (1964 and 1971) and served the Board as its Secretary-Treasurer (1967-1970). He received the Outstanding Alumnus Award from the University of Minnesota School of Dentistry Alumni Association in 1980, the Outstanding Faculty Award at Emory University School of Dentistry in 1967 and is a Fellow of the American College of Dentists as well as a Fellow of the International College of Dentists. Chuck has served as Consultant in Oral Pathology to Fort Benning, Fort Bragg, Fort Jackson and Lackland Air Force Base as well as to the V.A. Hospital and Grady Memorial Hospital in Atlanta.

He is Associate Editor of the **Journal of Oral Pathology** (since 1971) and is on the Editorial Board of the Oral Pathology Section of **Oral Surgery, Oral Medicine and Oral Pathology**, having served as Editor of the Section 1970-1976. He was Editor of the American Academy of Oral Pathology 1970-1976.

The School is very fortunate to have him back with us and heartily welcome him and Patty back to St. Louis.

JEG

## Continuing Education Programs

Date	Topic	Instructor
Apr. 9, 1983	Aerobics - the Science of Preventive Medicine	Kenneth H. Cooper, M.D., Ph.D. Dallas, Texas
Apr. 20, 1983	Update in Oral Medicine	Leslie S. Cutler, D.D.S., Ph.D. University of Connecticut
May 21, 1983	First Annual William E. Koch Memorial Lecture New Dimensions in the Diagnosis of Facial Pain and Dysfunction	Bernard T. Williams, D.D.S. Kansas City, Missouri



An important feature of our Big Brother program has been an office tour day. Above are some of the "Little Brothers" entering the office in the County in which Charles Niesen '75 and Kevin Groth '80 practice.

Above, Kevin Thorpe '79 is seen pointing out some of the features of his office on the December 12 tour.

## Big Brother Program

The Big Brother Program has featured a number of programs and activities so far this year. A wine-and-cheese reception introduced alumni and students in September after alumni and students had been paired by Drs. Pat Wilson, Greg Newton, and Sandy Wax, with students Pincock and Kasper. In October, four alumni held a panel discussion on

various dental careers. In December, Drs. Greg Newton and Mike Brann arranged for the students to visit several local dental offices on a Sunday. A social get-together for alumni and students in January, a seminar in February on the hiring of office personnel and personnel records and a March program on rural dentistry were planned.

## Alumni Sought For Practice Placement Program

We are looking for Washington University Alumni who are seeking an associate or a partner for spring 1983 and would like a W.U. graduate for the position. Several members of the class of '82 joined private practices through this placement service last year. We hope to increase that number with

the next graduating class. Please send any pertinent details of practice opportunities to Greg Newton, D.M.D., 6744 Clayton Road, St. Louis, Missouri 63117. This information will be made available to senior class members for further inquiry.

Washington University  
School of Dental Medicine  
4559 Scott  
St. Louis, Missouri 63110



MEMBER PUBLICATION  
AMERICAN ASSOCIATION OF DENTAL EDITORS

Non Profit Org.  
U.S. Postage  
PAID  
St. Louis, Mo.  
Permit No. 2501